



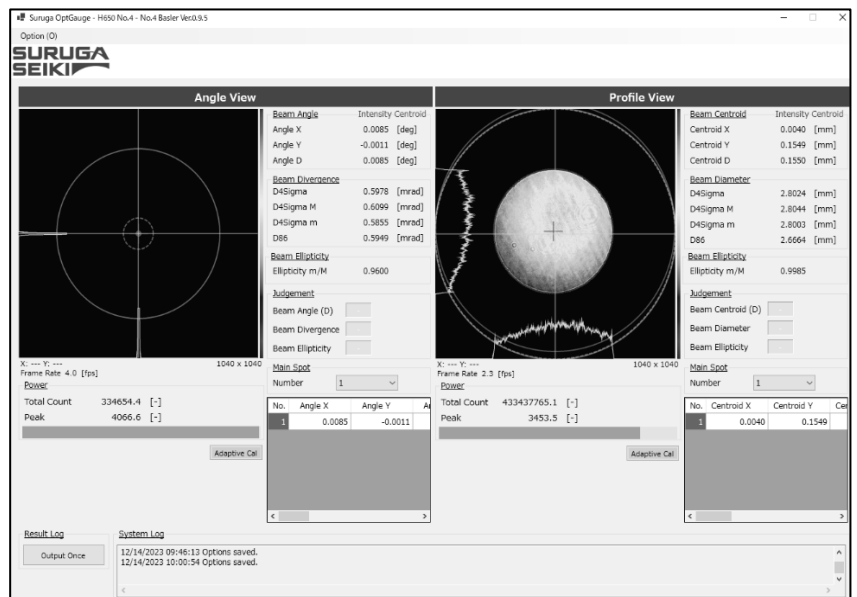
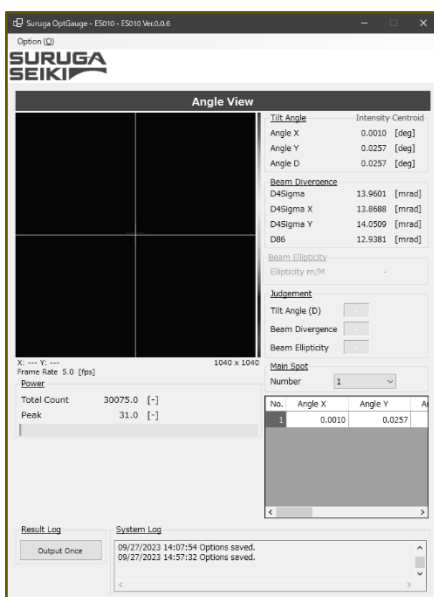
Suruga OptGauge

Installation Manual

Thank you for purchasing our product.

Please read this manual, carefully, before any use.

Thereafter, you are advised to keep it in a safe place for immediate future reference.



Index

| | |
|--|----|
| Preface | 3 |
| 0. Definition (Terms and Abbreviation) | 4 |
| 1. Installation | 5 |
| 2. Uninstallation(Removing the Software) | 7 |
| 3. Version-Up* | 9 |
| 4. Version-Down* | 10 |

Preface

This is an “installation manual” for the Suruga OptGauge (hereafter as the Software). This installation manual explains procedures for installation, uninstallation, version-up, and version-down.

Please refer to the “User’s Manual” for general terms and conditions and operation of the Products.

COPYRIGHT

Copyright © SURUGA SEIKI Co. Ltd. All rights reserved.

Suruga OptGauge Installation Manual

| | |
|---------------|-------------|
| Issue date | 2024. March |
| Guide Version | V.1.0.0 |

Revision History

| Date | Revision | Details |
|-------------|----------|-------------|
| 2024. March | V.1.0.0 | 1st Edition |

NOTICE

The information contains in this installation manual is deemed correct at the time of publication. SURUGA SEIKI CORPORATION reserves the right to change its specifications without notice to the users of the Products offered.

0. Definition (Terms and Abbriviation)

| Terms • Abbreviation | Definition |
|----------------------|-----------------|
| The Software | Suruga OptGauge |

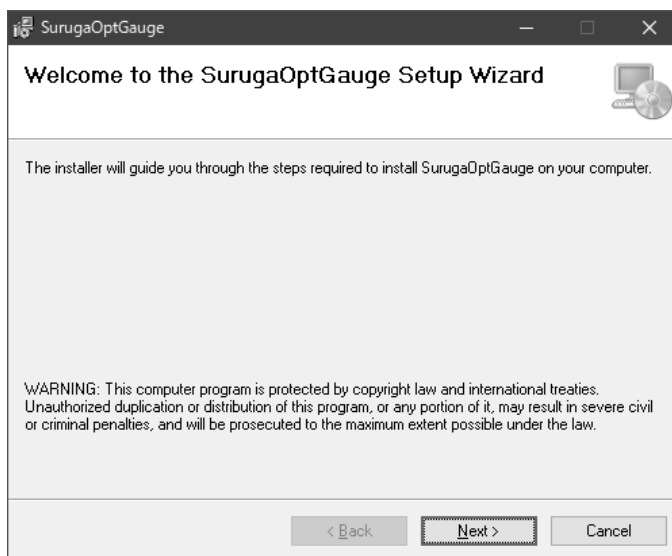
1. Installation

Here explains the installation procedure for the Software.

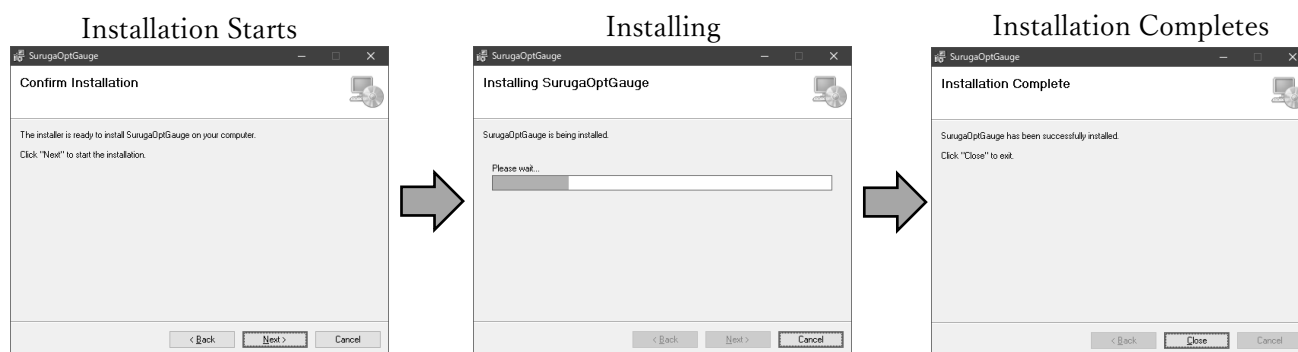
1. Double-click on the file name “SurugaOptGaugeSetup_x.x.x.msi” as opened the folder shown below.

| Name | Date Modified | Type | Size |
|---|------------------|---------------------|-----------|
|  SurugaOptGaugeSetup_x.x.x.msi | 2023/11/28 19:12 | Windows install ... | 61,590 KB |

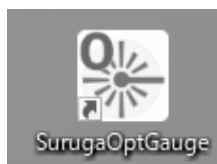
2. In the popup window, click “Next>” as shown blow.



3. After click on the "Next>", automatically, the installation procedure starts.
When the auto installation completes, click on "Close" as shown below.



4. After the installation, it creates "SurugaOptGauge" icon as shown blow.



Icon

This concludes the installation procedures.

2. Uninstallation(Removing the Software)

BEFORE PROCEEDING:

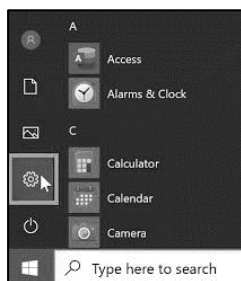
Please note that IF you re-install or version-down the Software, you must uninstall the currently installed SurugaOptGuage.

Here are for the uninstallation procedures on the Windows 10 OS as an example. However, the actual procedures for uninstallation of the Software may differ depends on your OS.

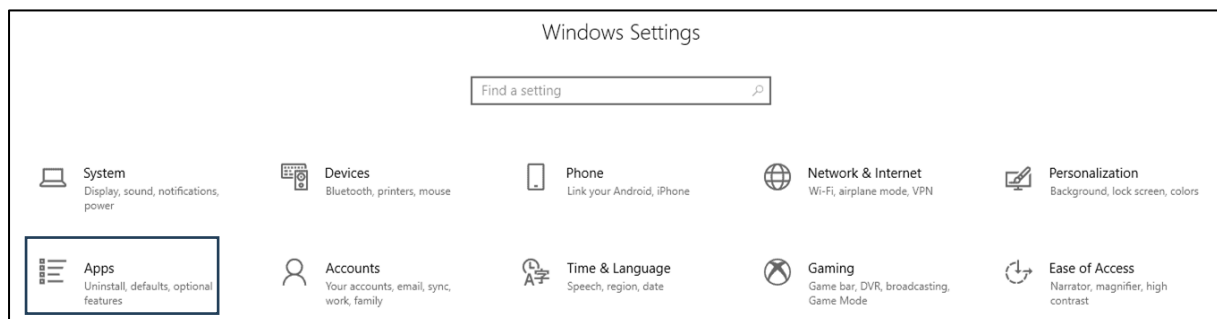
Please follow proper uninstallation procedures on your specific OS type or version.

Uninstallation Procedures

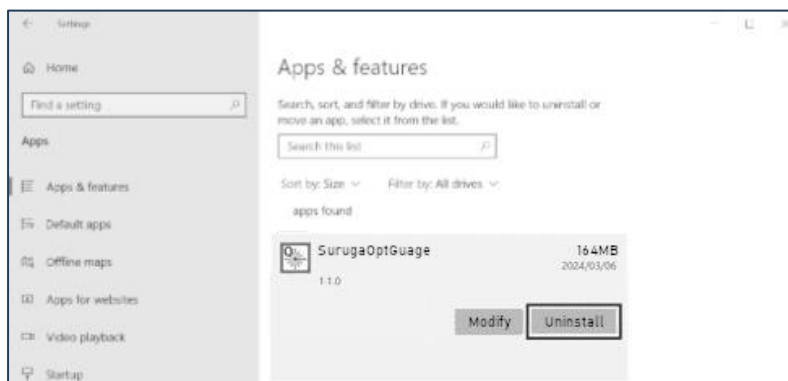
1. Find the “Settings” on Windows Start menu to click on.



2. Click on the “Apps” on the “Windows Settings” menu.



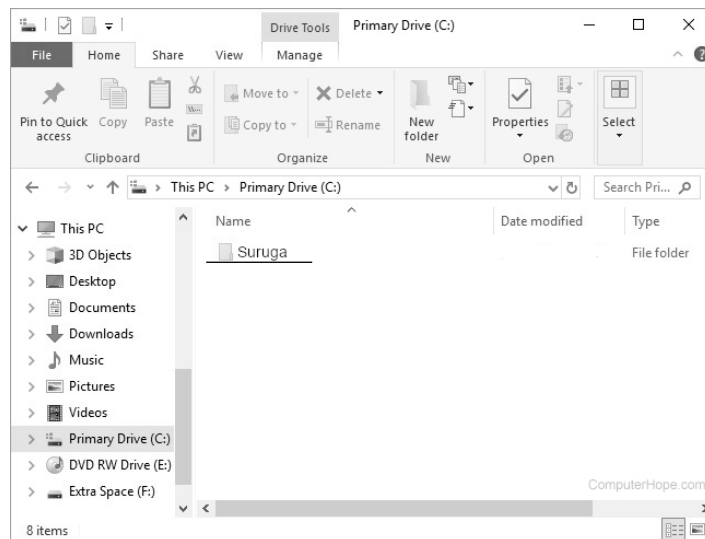
3. Please select the “SurugaOptGuage” on the “Apps & features” menu and click the “Uninstall.”



The uninstallation starts to remove “SurugaOptGuage” from your PC.

Additional Uninstallation Procedure

If you wish to remove all data with the Software, as well, please delete the save data folder names “Suruga”
Folder location, 「C:/Users/[UserName]/Documents/Suruga」



This concludes the uninstallation procedures.

3. Version-Up*

The procedures for version-up are the same as the Software installation. Please refer to the Installation section. Installing the latest version overwrites the older version of the Software.

Additional Information

- "Version-Up" preserves all previously saved setting data.
- You cannot install multiple of versions of the Software, concurrently.

* "Version-Up" means to install a newer version of the Software than one that currently being installed.

4. Version-Down*

The following procedures instruct how to version-down.

1. Uninstall the currently installed Software. Please refer to the Uninstallation section for instruction.
2. Install an older version of the Software. Please refer to the Installation section for instruction.

Additional Information

- “Version-Down” preserves all previously saved setting data.
- You cannot install multiple of versions of the Software, concurrently.

* “Version-Down” means to install an older version of the Software than one that currently being installed.

Misumi Group
SURUGA SEIKI CO., LTD.

HEAD OFFICE

505, Nanatsushinya, Shimizu-ku, Shizuoka City, Shizuoka 424-8566, Japan
Tel : +81-54-344-0332 Fax : +81-54-346-1196 URL<<https://eng.surugaseki.com/>>